

**NETSTAR**

# Netstar *STARtag.*

Sticker use guide



# An ultra-thin, flexible tracker that keeps assets trackable.

Engineered for discretion and designed for versatility, the sticker is an ultra-thin tracking beacon that blends seamlessly into almost any surface, flat or curved, thanks to its integrated 3M adhesive.

At only 1.5mm thin and a featherlight 14 grams, it delivers powerful performance in an almost invisible form.

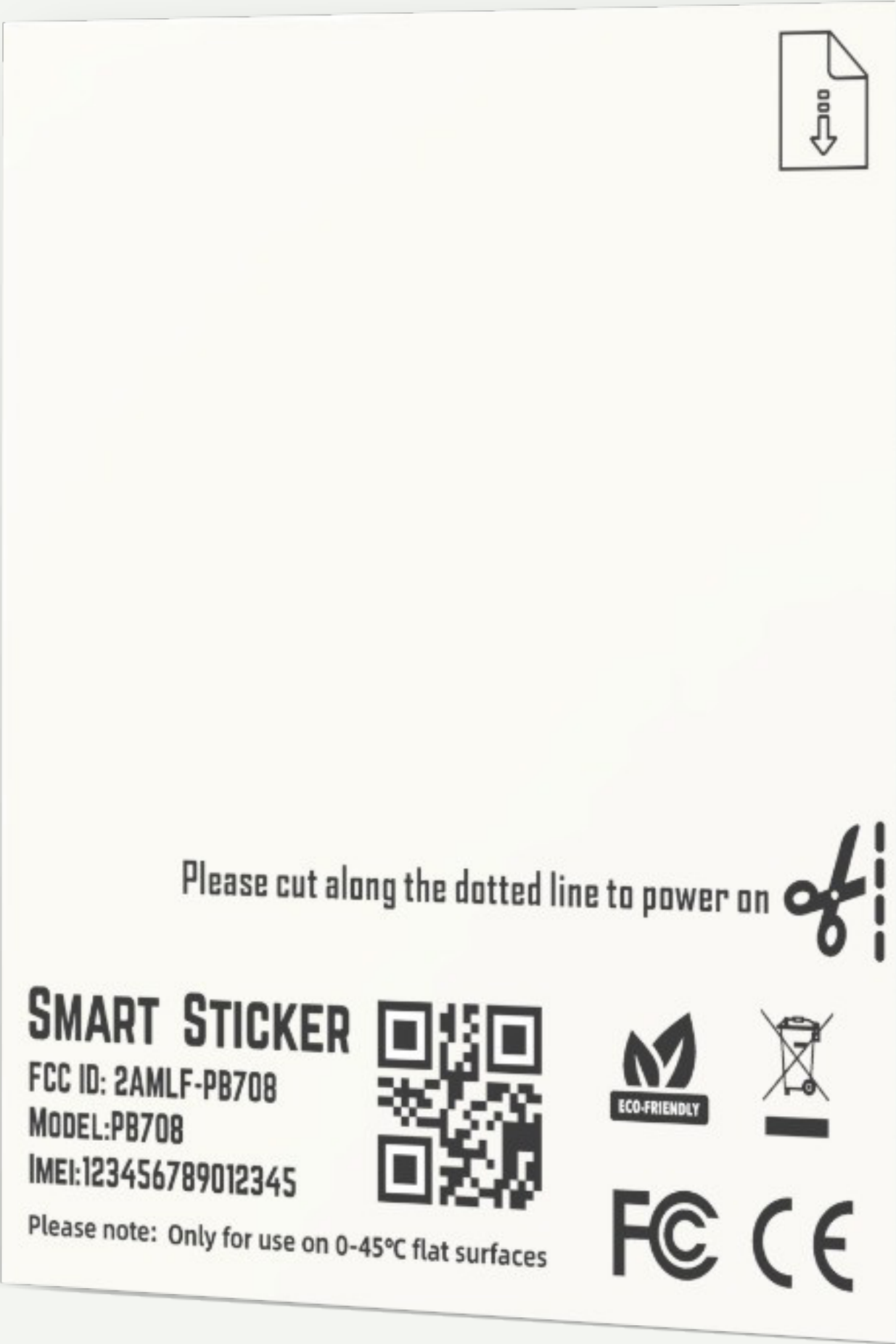
Harnessing the power of a global Bluetooth-based crowdsourcing constellation, the sticker pinpoints assets across the planet with quiet precision. Its zinc-ion battery, safe, sustainable, and biocompatible, fuels up to 12 Months of continuous mission time.

From cargo containers in transit to high-value equipment in motion, the sticker adapts effortlessly. It's more than a tracker, it's a guardian for your moving world.





Connectivity	Bluetooth low energy (BLE)
Battery	25mAh Zn-Mn battery
Battery Life	60 days
Power	Cut tab to activate
Dimensions	65*56mm Thinnest 0.4mm Thickest 1.2mm
Weight	4g
Colour	White
Operating temperature	0 °C to +45 °C
Range	40 meters
IP rating	IP54
Certification	CE, FCC, RoHS



***NB\*: Self install - For secure attachment to assets, simply remove the adhesive backing and affix the device to the chosen item on a flat surface***



Connectivity	Bluetooth low energy (BLE)
Battery	540mAh Li-MnO2 battery
Battery Life	12 months
Power	1* power button
Dimensions	95x 65 x 1.6mm
Weight	8,6g
Colour	White
Operating temperature	-20 °C to +60 °C
Range	40 meters
IP rating	IP68
Certification	CE, FCC, RoHS



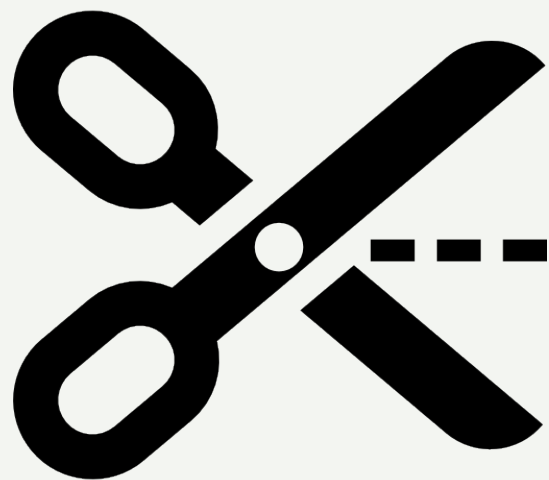
**NB\*: Self install - For secure attachment to assets, simply remove the adhesive backing and affix the device to the chosen item on a flat surface**



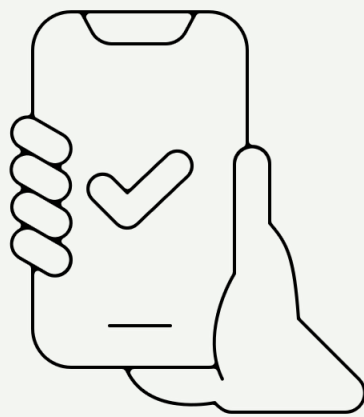


# Use instructions of STARtag sticker

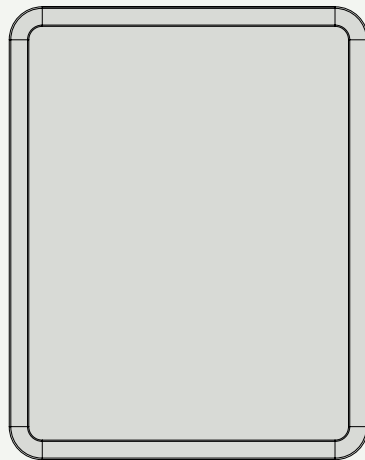
Please cut along the dotted line to power on



Open the app or web portal and enter the username and password to view the device.



For secure attachment to assets, simply remove the adhesive backing and affix the device to the chosen item on a flat surface.



*Note: Please do not immerse the battery in water or put it into fire, please do not destroy or force open the battery, the battery is disposable and does not allow charging!  
To protect the environment, please recycle the used battery.*

## Important reminders

Battery life time varies depending on individual usage habits. Frequent audible searching will accelerate the consumption of the battery.

In order to ensure better dustproof and waterproof, after installation, please be sure to press the upper and lower covers to ensure that the equipment is sealed.

Because the device adopts crowdsourcing network, there may be a delay in positioning, such as the management platform and APP no data, you can wait for half an hour to refresh the location information. And try to open the device in the place where there are more cell phones.

Please do not disassemble the device, improper handling by non-professionals may cause damage to the device..



**Warning keep batteries away form children:** Swallowing may lead to serious injury or death in 2 hours, due to chemical burns and potential perforation of the oesophagus.  
If you suspect your child has swallowed or inserted a button battery, immediately call the 24-hour Posion Informatiion Centre for emergency specialists advice.





# FCC Compliance Statement

This device complies with part 15 of the FCC Rules. Operation is subject to the following two conditions: (1) This device may not cause harmful interference, and (2) this device must accept any interference received, including interference that may cause undesired operation.

Any changes or modifications not expressly approved by the party responsible for compliance could void the user's authority to operate the equipment.

NOTE: This equipment has been tested and found to comply with the limits for a Class B digital device, pursuant to Part 15 of the FCC Rules. These limits are designed to provide reasonable protection against harmful interference in a residential installation. This equipment generates, uses and can radiate radio frequency energy and, if not installed and used in accordance with the instructions, may cause harmful interference to radio communications. However, there is no guarantee that interference will not occur in a particular installation.

If this equipment does cause harmful interference to radio or television reception, which can be determined by turning the equipment off and on, the user is encouraged to try to correct the interference by one or more of the following measures:

- ✓ Reorient or relocate the receiving antenna.
- ✓ Increase the separation between the equipment and receiver.
- ✓ Connect the equipment into an outlet on a circuit different from that to which the receiver is connected.
- ✓ Consult the dealer or an experienced radio/TV technician for help.

*The device has been evaluated to meet general RF exposure requirement. The device can be used in portable exposure condition without restriction.*



**NETSTAR**

# Find out more

Simply visit [netstar.co.za](https://netstar.co.za) to order  
your new vehicle tracking system.

Call us on [0860 12 24 36](tel:0860122436) where one of our  
sales consultants will gladly assist you.

Find out more [my.netstar.co.za](https://my.netstar.co.za) |  
[onlineleads@netstar.co.za](mailto:onlineleads@netstar.co.za) | [www.netstar.co.za](https://www.netstar.co.za)