

NETSTAR

Netstar STARtag.

Puc use guide

Compact, versatile and built for discreet theft recovery.

Precision-crafted for protection, the Puc is a compact tracking unit built to shield what matters most. Whether securing personal belongings or acting as a silent ally in theft recovery, it operates through a global Bluetooth crowdsourcing network, delivering real-time location with stealth and reliability.

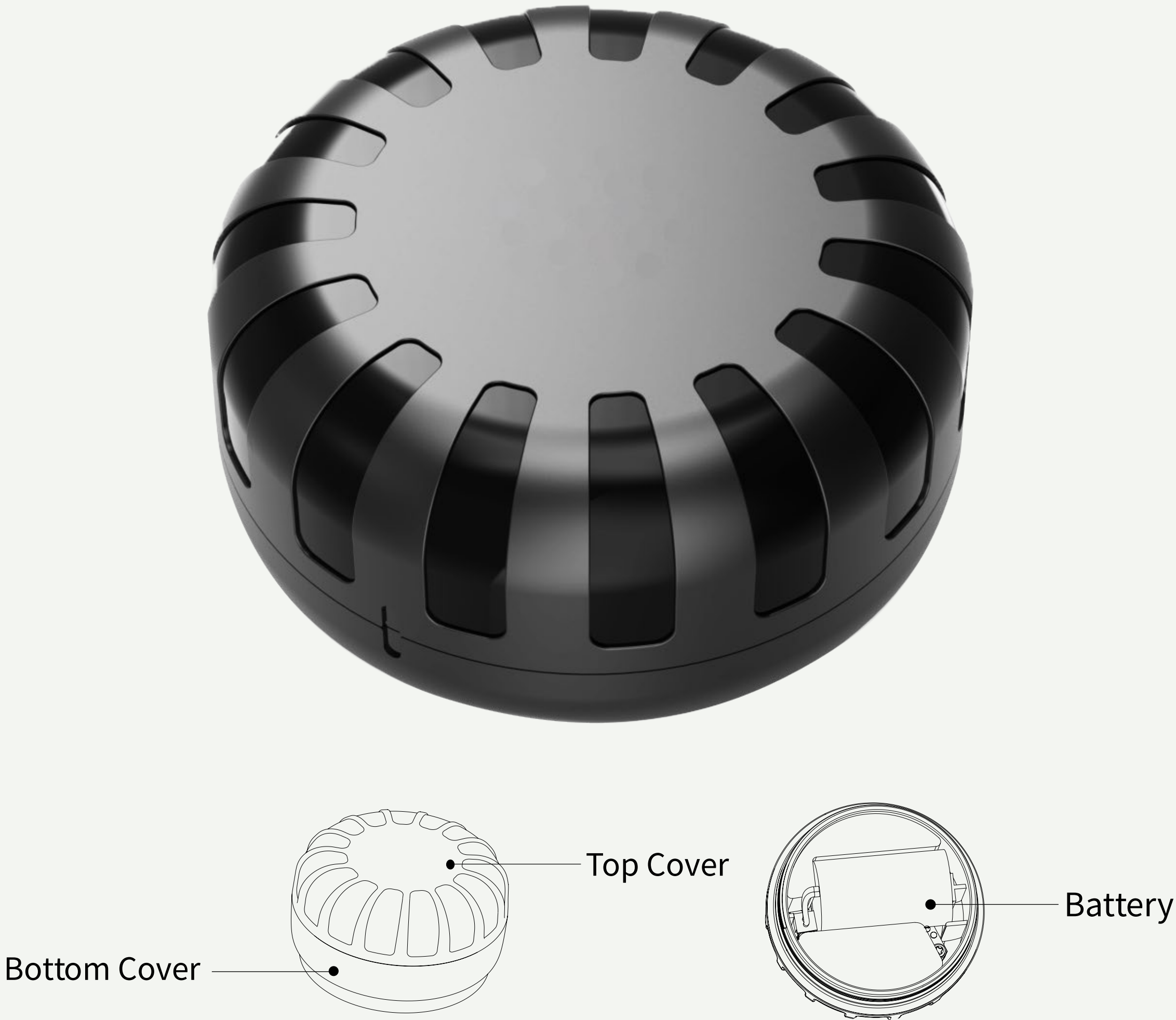
Adaptable by design, it mounts effortlessly using 3M double-sided adhesive or an optional magnetic base, ideal for metal surfaces, vehicle interiors, or the hidden folds of a suitcase. Its ultra-low power design allows for up to 60 months of continuous uptime. Its slim silhouette makes it easy to conceal, yet impossible to overlook when it counts.

Ideal for:

- ✓ Theft recovery missions
- ✓ Securing valuables on the move
- ✓ Covert placement in vehicles or luggage
- ✓ Dynamic asset tracking in urban environments



Connectivity	Bluetooth low energy (BLE)
Battery	CR14250 800mAh battery
Battery Life	5 years
Power	Internal battery is plugged in
Dimensions	42.50x 24mm
Weight	28g
Colour	Black
Operating temperature	-20 °C to +70 °C
Range	40 meters
IP rating	IP68
Certification	CE, FCC, RoHS



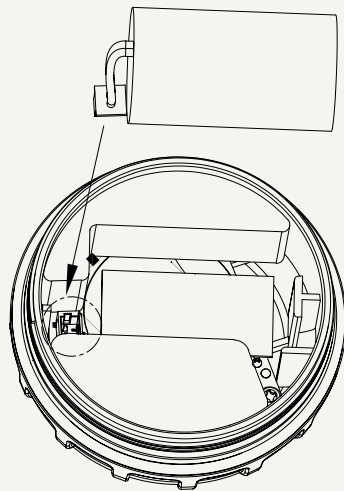
NB*: Self install - For secure attachment to assets, simply remove the adhesive backing and affix the device to the chosen item on a flat surface

Use instructions of STARtag puc

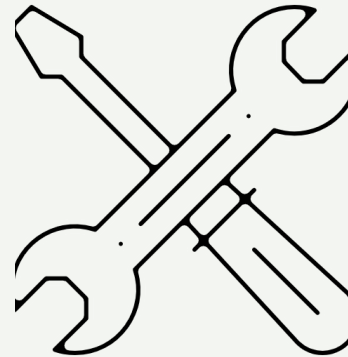
Please rotate the mechanism in an anticlockwise direction.



Please insert the battery plug into the socket of the device in accordance with the instructions provided. Once the device is correctly connected, it will start to function and you will hear a beeping sound.



For fixed installation, it can be attached to flat objects with 3M foam adhesive, tear off the release paper, or attached to metal surfaces with magnetic accessories. Please select the appropriate accessories according to the actual needs of the scene.



Open the app or web portal and enter the username and password to view the device.



Note: Please do not immerse the battery in water or put it into fire, please do not destroy or force open the battery, the battery is disposable and does not allow charging! To protect the environment, please recycle the used battery.

Important reminders

Battery life time varies depending on individual usage habits. Frequent audible searching will accelerate the consumption of the battery.

In order to ensure better dustproof and waterproof, after installation, please be sure to tighten the top and bottom caps firmly.

Because the device adopts crowdsourcing network, there may be a delay in positioning, such as the management platform and APP no data, you can wait for half an hour to refresh the location information.

Please do not disassemble the device, improper handling by non-professionals may cause damage to the device.

Please use the battery specified by the original manufacturer of the terminal, the use of any other accessories will make all warranty services become invalid.

The manufacturer of the terminal will not bear any warranty responsibility for any damage caused by the use of non-original factory accessories on the terminal.



Warning keep batteries away form children: Swallowing may lead to serious injury or death in 2 hours, due to chemical burns and potential perforation of the oesophagus. If you suspect your child has swallowed or inserted a button battery, immediately call the 24-hour Posion Informatiion Centre for emergency specialists advice.



FCC Compliance Statement

This device complies with part 15 of the FCC Rules. Operation is subject to the following two conditions: (1) This device may not cause harmful interference, and (2) this device must accept any interference received, including interference that may cause undesired operation.

Any changes or modifications not expressly approved by the party responsible for compliance could void the user's authority to operate the equipment.

NOTE: This equipment has been tested and found to comply with the limits for a Class B digital device, pursuant to Part 15 of the FCC Rules. These limits are designed to provide reasonable protection against harmful interference in a residential installation. This equipment generates, uses and can radiate radio frequency energy and, if not installed and used in accordance with the instructions, may cause harmful interference to radio communications. However, there is no guarantee that interference will not occur in a particular installation.

If this equipment does cause harmful interference to radio or television reception, which can be determined by turning the equipment off and on, the user is encouraged to try to correct the interference by one or more of the following measures:

- ✓ Reorient or relocate the receiving antenna.
- ✓ Increase the separation between the equipment and receiver.
- ✓ Connect the equipment into an outlet on a circuit different from that to which the receiver is connected.
- ✓ Consult the dealer or an experienced radio/TV technician for help.

The device has been evaluated to meet general RF exposure requirement. The device can be used in portable exposure condition without restriction.

NETSTAR

Find out more

Simply visit netstar.co.za to order
your new vehicle tracking system.

Call us on [0860 12 24 36](tel:0860122436) where one of our
sales consultants will gladly assist you.

Find out more my.netstar.co.za |
onlineleads@netstar.co.za | www.netstar.co.za